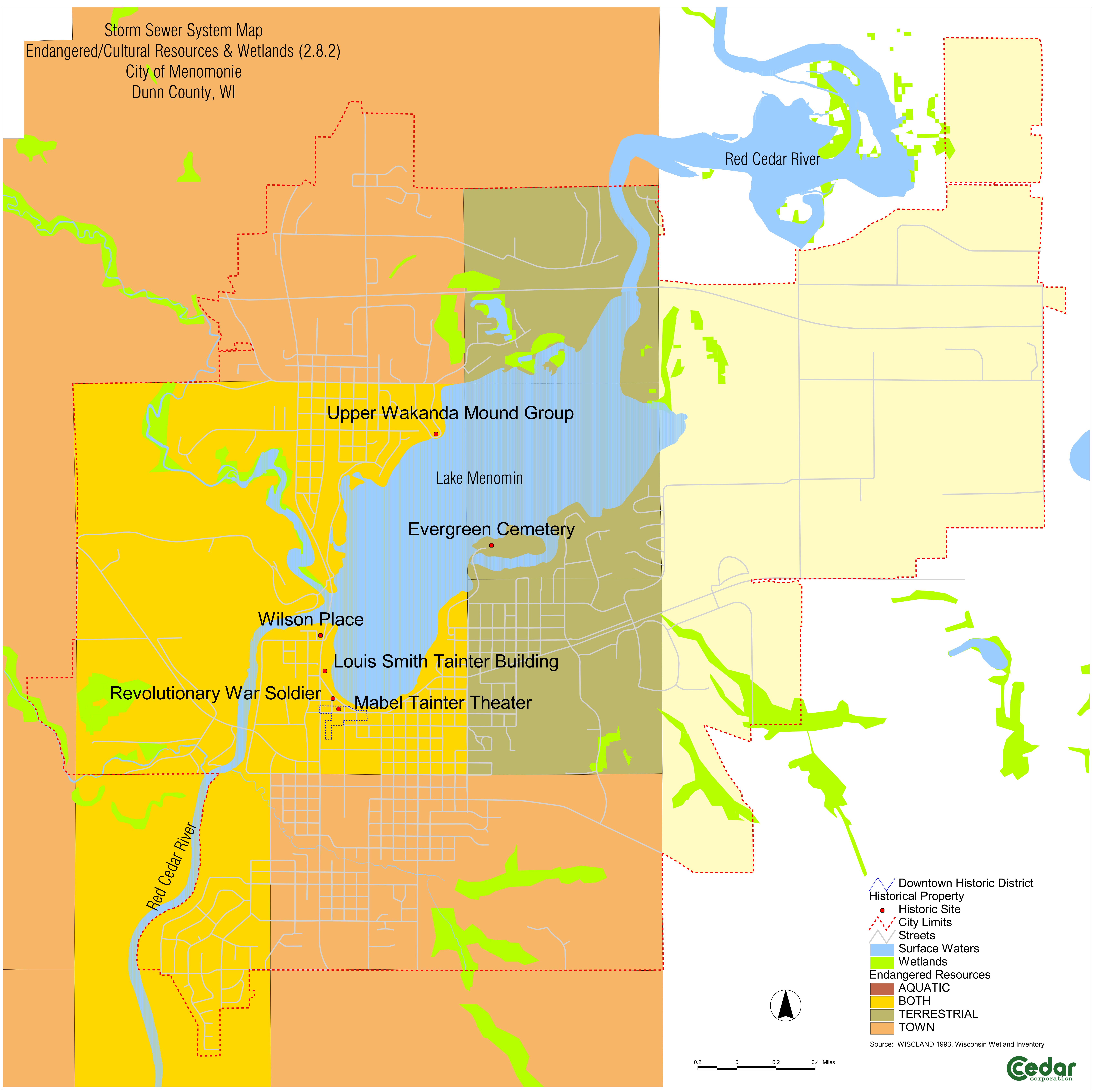


Storm Sewer System Map  
Endangered/Cultural Resources & Wetlands (2.8.2)  
City of Menomonie  
Dunn County, WI



- Downtown Historic District
- Historical Property
- Historic Site
- City Limits
- Streets
- Surface Waters
- Wetlands
- Endangered Resources**
- AQUATIC
- BOTH
- TERRESTRIAL
- TOWN

Source: WISCLAND 1993, Wisconsin Wetland Inventory

0.2 0 0.2 0.4 Miles

