

CHAPTER 7
Utilities and Community Facilities

Introduction

The provision of adequate public utilities and facilities is essential for the development of any community. It is important that public utilities and public facilities be available to meet the needs of citizens, businesses, industry, and government entities.

This section discusses existing systems and planned projects in the areas of water, sanitary sewer, storm sewer, solid waste, recycling, recreation, and public facilities and services. Each utility will be discussed separately.

Survey Results

Need for more green space?		
	Count	Percent
Yes	21	17.9%
No	81	69.2%
Not sure	14	12.0%
If yes, where (NARRATIVE)	1	0.9%
	117	100.0%

Almost 70% of respondents don't feel there is a need for more green space in the Village.

Improve following park amenities:	
	Count
Playground equipment	37
Benches & picnic tables	19
Soccer fields	5
Baseball/softball fields	8
Football fields	1
Shelters	21
Tennis courts	9
Basketball courts	16
Volleyball courts	8
Horseshoe pits	4
Parking	18
Ice skating rink	23
Skate park	12
Trails	35
	216

More people felt that playground equipment and trails were the most needed improvement of the Village's parks amenities.

DRAFT

Do you have flooding issues?		
	Count	Percent
Yes	12	10.2%
No	97	82.2%
Not sure	9	7.6%
If yes, where (NARRATIVE)	0	0.0%
	118	100.0%

Over 10% of the respondents to the survey have flooding issues.

Community Facilities and Services

The Village of Clear Lake has a wide variety of community facilities and services. The following services are available within the Village of Clear Lake or can be found in the vicinity. It is likely the Village and surrounding area will continue to provide these services in the future.

Library

Library services are found in the Village. The Clear Lake Public Library is part of the Indianhead Federated Library System. The library is open to Village and surrounding area residents and has a total service population of over 3,000. The Clear Lake Public Library is part of the MORE system which allows the users to browse materials at other libraries within the MORE system and reserve books through an interlibrary loan. The library was constructed in 2004 and is meeting current needs. There is no need or plan for future expansion in the foreseeable future.

Health Care Facilities

The Amery Regional Medical Clinic is located in the Village of Clear Lake. Additional nearby health care facilities are the Amery Regional Medical Center in the City of Amery and Westfields Hospital in New Richmond. It is likely that these facilities, and the many others throughout Polk and St. Croix Counties and the Twin Cities Metropolitan Area, will continue to provide health care for residents. Clear Lake residents also have access to a local eye doctor and two chiropractic care services.

Veterinary Service

The Village is also fortunate to have a local veterinary clinic to treat and provide health services to area pets and animals.

Childcare Facilities

There are a variety of certified childcare facilities in the Village of Clear Lake and neighboring communities. Little Lambs daycare is a large daycare facility in the Village where the majority of the local daycares are private and run out of homes. The current available care is meeting the current and projected future needs of the community.

DRAFT

Fire/Rescue

The Clear Lake Fire Department provides protection for the Village and covers over 85 square miles, which consists of the Village of Clear Lake and the Towns of Black Brook and Clear Lake, and portions of the Towns of Forest, in St. Croix County, Vance Creek, in Barron County, and New Haven, in Dunn County. It is a volunteer fire department with approximately 30 firefighters that averages 45 calls per year. Vehicular equipment for the fire department includes:

- 2 pumper
- 2 tankers
- 1 equipment van
- 1 "Quick Attack" truck
- 1 pick up/brush rig
- 6x6 ATV
- Trailer with rescue equipment.

The Clear Lake Fire Hall is located across from the municipal building in the middle of the Village. Future needs include replacing the existing "JAWS" equipment.

Emergency Medical Services

Clear Lake Ambulance Service, which consists of the Villages of Clear Lake and Clayton and the Towns of Black Brook and Clear Lake, and portions of the Towns of Forest, in St. Croix County, Vance Creek, in Barron County, and New Haven, in Dunn County, provides EMS protection for the Village. The EMS service consists of 15 EMTs and 10 first responders that work on a volunteer basis. They receive an average of 200 calls per year and have one ambulance. Currently, they have one ambulance and when that ambulance is out on a call, the City of Amery provides backup services if needed. Future equipment needs include a computerized reporting system and a new ambulance.

Post Office

Village of Clear Lake residents use the Clear Lake Post Office which provides all postal services for Village residents. The Post Office is located downtown at 438 3rd Avenue.

Cemeteries

There are two cemeteries in the Village of Clear Lake. One is the Swedish Congregational Cemetery, and the other is the Clear Lake Village Cemetery. The Clear Lake Village Cemetery includes the All Veteran's Memorial that commemorates 1700 local veterans on six granite monuments. One monument commemorates those that have made the ultimate sacrifice. The current facilities are adequate to meet current and future needs.

DRAFT

Radio

The Village of Clear Lake is within listening distance of a wide variety of radio stations.

Internet

Currently, in the Village of Clear Lake, there is a variety of ways to access the internet including dial-up, satellite, and DSL. Village residents have expressed a desire for cable internet.

Website

The Village of Clear Lake has a website that can be accessed at the following address: www.clearlakewi.com. This website provides valuable information regarding local businesses and points of interest.

Newspaper

Several local and regional newspapers are in circulation in the Village of Clear Lake including the Amery Free Press and the Clear Lake Museum Chronicle. The Amery Free Press is the official newspaper for the Village where legal notices are posted.

Telephone

Clear Lake Telephone Company provides the Village area with local phone, and long distance services are provided by a choice of most major long distance carriers and will continue to do so for the foreseeable future.

Cellular Phones

The Village of Clear Lake is within the service area of most major and local area cell phone companies.

Solid Waste Disposal

Current solid waste disposal needs are handled by Waterman's Sanitation out of Amery, Wisconsin. They offer weekly curbside pickup on Tuesdays. The service provided meets the current needs and will continue to meet the future solid waste disposal needs of the Village.

Recycling Facilities

Waterman's Sanitation also provides recycling curbside pickup on the 1st and 3rd Tuesdays. The service provided meets the current needs and will continue to meet the future recycling needs of the Village.

Parks

Clear Lake Village Park consists of over 170 acres of the northern most portion of the Village. The park includes portions of three lakes that split the park into three different parts. The southern piece of the park is developed and used by local residents and visitors. Park equipment includes the following:

DRAFT

- 2 shelters
- Chalet
- 10 – site campground
w/ electrical and water
hookup
- Bathroom/shower
facilities
- Swimming area
- Playground equipment
- Horseshoe courts
- Fishing docks
- Boat launch
- Ball field

Future development of the park may include expansion of the north park area and development of a trail system throughout the park.

Village Hall

The current Village Hall was built in 2004 and is located at 350 4th Street. The Village Hall has ample space for existing and future needs. The Board and Plan Commission meetings are held in a board room shared with the library and police department.

Police Department

The Clear Lake Police Department is also located at 350 4th Street in the Village Municipal building with the Village Hall and public library. The Clear Lake Police Department consists of four officers: two are full time and two are part time. Future needs include adding manpower as future growth occurs.

Public Works

The Clear Lake Public Works Department works on the local utilities in the Village. They have office space in the Village Hall, the waste water treatment plant, and in the Public Works Garage. There are also two primary storage facilities, at 360 5th Street – Public Works Garage, and at 531 4th Avenue.

Schools

The Village of Clear Lake is located in the School District of Clear Lake. There are two schools in the District: Gaylord Nelson Education Center Elementary School and Clear Lake Junior-Senior High School.

The Gaylord Nelson Education Center Elementary School is located at 138 8th Avenue. Enrollment is approximately 330 students. The school teaches grades K – 6th grade.

The Clear Lake Junior-Senior High School is located at 1101 3rd St. SW and has an enrollment of approximately 95 students in Junior High (grades 7-8) and 225 in the high school (grades 9-12).

Both school facilities are adequate to meet the needs of the current and future population.

DRAFT

Wastewater Treatment Plant / Sanitary System

The sanitary system in the Village of Clear Lake consists of sanitary sewer mains, lift stations, forcemains, and a wastewater treatment plant (WWTP). The sanitary sewer system collects wastewater from homes, businesses, and industries and uses gravity mains and lift stations to convey it to the WWTP where it is treated. Sanitary sewer mains within the Village are maintained by the Village.

There are three lift stations in the Village of Clear Lake. Lift stations are used when the topography does not allow for gravity mains. The wastewater is pumped to a chamber so it can then either use gravity mains or be pumped to the WWTP.

Some of the issues of the existing sanitary system include a sharp bend in the system at the manhole at 5th Avenue and 2nd Street. Because the turn is sharp, during times of peak flow, there could be potential backups. The other issues relate to future development south of 3rd St. SE, and 3rd Place. Currently, there are just 3" and 4" lines and if future development were to occur to the south, sewer mains would have to be used.

The current capacity of the WWTP is 327,000 gallons per day. Currently, the Village is using approximately 220,000 to 230,000 gallons per day of that capacity. At this time, the Village does not have a need to expand the WWTP. Weekly monitoring and testing shows that the WWTP is functioning properly as the test results meet the requirements and are below the state limits.

There are also some Private Onsite Wastewater Treatment Systems (POWTS) in the Village of Clear Lake. These are primarily located in the southern portion of the Village. POWTS are commonly referred to as septic systems and are permitted and monitored by Polk County.

Sanitary Sewer Service Area

In order to gauge where development can occur within the existing sanitary and water infrastructure, it is important to identify the existing and future extent of the sanitary sewer service area. Map 7-1 shows the areas that could be developed without addition of lift stations or significant upgrades to the infrastructure.

Water System

The water system of the community is made up of wells, water towers, hydrants, and watermains that help draw, store, maintain pressure, and distribute water to homes, businesses, and industries in the Village.

DRAFT

The Village of Clear Lake is served by two wells. Well #2 is located at 3rd Avenue and 3rd Street. It has a pumping capacity of 425 gallons per minute. Only typical maintenance is planned at this time.

Well #4 is located at 3rd Avenue and 6th Street Northwest. It has a pumping capacity of 845 gallons per minute. Only typical maintenance is planned at this time. Both wells have more than enough capacity to meet the water needs of the Village.

The Village has one water tower built in 1980. The water tower is located at 3rd Avenue and 6th Street Northwest and has a capacity of 200,000 gallons. The tower is used for water storage and to pressurize the water system. The tower adequately meets the needs of the Village. It was last inspected in the fall of 2007. The inspection revealed that the tower is structurally sound, but interior coating needs to be redone.

The Village also has one booster station at U.S. Highway 63 and 5th Street intersection. The Village is responsible for the maintenance of the watermains, hydrants, wells and booster stations within the Village.

There are also a number of private wells in the rural area of the Village. Private wells must comply with all statutes, ordinances, regulations, and rules of the State and Polk County.

The Village's water supply has to meet all specifications set by the Safe Drinking Water Act established by the Environmental Protection Agency in 1974. Copies of the Village's testing results are mailed to Village residents each year.

Overall, the water system is in good condition. In 2001 a Water System Distribution Study was completed. The study evaluated the existing water supply system, conducted fire flow testing, determined system requirements, and identified areas of proposed improvements and future improvements for developing areas.

Water pressure plays a role in future development. In areas of low pressure (35 psi or less) a booster station may be needed to provide adequate water pressure. Map 7-2 shows the different pressures in the two pressure zones throughout the Village. Pressure Zone A is located north of U.S. Highway 63 and east of Clear Lake Park. It has a booster station to the south. The rest of the Village falls in Pressure Zone B and is based on the gravity from the water tower.

Stormwater

The Village's stormwater system is made up of outfalls, inlets, and storm sewer pipes. The stormwater system is designed to collect stormwater and snowmelt runoff and move it away from existing development. Today, an emphasis is put

DRAFT

on stormwater quantity, quality, and infiltration in an effort to protect the natural resources within watersheds and basins.

There are several challenges to stormwater management in the Village of Clear Lake. First, the topography makes some areas susceptible to erosion due to steep slopes and unstable ground cover. Second, sand washing off the streets can clog outfalls. Holding ponds are commonly used to catch sediment and allow it to settle before the water passes through or infiltrates. At this time, the Village does not have any holding ponds, but will have to consider maintenance issues if and when ponds are constructed.

Other methods the Village can use to reduce sediment and related contaminants are to reduce the amount of sand used on streets in the winter and to encourage rain gardens to capture runoff in resident's yards.

During significant storm events, the corner of 3rd Street and 4th Avenue does flood. This could eventually lead to washout problems if not addressed in the near future. The large culvert on Golf Road will also crest and flood the road during significant storm events.

Telecommunications Facilities

Cellular Service and Towers

New technologies are rapidly advancing, and cellular phone service is a vital component to communication in today's society. While cell towers are a necessary component to this form of communication, there can become an eyesore on the landscape and the environment. The Village does have a section in their zoning code that regulates the placement of signal receiving antennas (including cell towers). Methods are used to incorporate these towers into the environment. Included in these methods are innovative ideas such as placing antennas on already existing structures like silos, water towers, street lights, and buildings. Using the existing structures minimizes the impact of towers. However, these alternative antenna placements are not ideal for every situation. Currently, Alltel has an antenna on top of the water tower.

Internet

The availability of high-speed internet service is an important factor for attracting new business and residents. Many businesses count on reliable services such as high-speed internet in order to be competitive and operate efficiently. Residents, especially those moving from an urban area, are used to amenities such as high-speed internet service. Dial up and High-speed internet service is available through Clear Lake Telephone.

DRAFT

Phone

Local residents can get local and long distance phone service through Clear Lake Telephone.

Cable

Clear Lake residents have access to cable and satellite television service. The cable infrastructure exists throughout the central commercial and residential areas of the Village. Cable is not available to the residential areas on the edges of the Village Limits. Clear Lake Telephone Company is the major cable service while the two major satellite service providers are Dish Network and DirecTV.

Energy Sources

Transmission / Distribution Lines

The Village of Clear Lake has both distribution lines and transmission lines running throughout the Village. Currently, most power lines in the Village are overhead lines. Also, there is a sub station located in the Village Limits on the west side of the Village. Future expansion will be determined by the market and will be supplied by private sources.

Electricity

The electricity provider for the Village is Xcel Energy. Xcel Energy serves areas in 11 states throughout the U.S. and covers most of Northwestern Wisconsin. Residential, business, commercial, and industrial are all sectors that are serviced by Xcel Energy. Xcel Energy generates electric power from a mix of fuel sources, and distributes natural gas and electricity over transmission and distribution lines throughout our service area. Future expansion will be determined by the market and will be supplied by private sources.

Windmills

With the cost of energy rising, interest in windmills to supplement electricity is becoming more common. Polk County regulates windmills under its Small Wind System Energy Ordinance. A windmill (small wind energy system) is used to generate electricity. No transmission facilities are allowed in major subdivisions created for residential purposes. Small energy wind systems must be setback an equal distance to 100% of its height, is less than 75 feet tall, and not within 3,000' of the ordinary high watermark. There are currently no windmills in the Village.

Utility Gas

Utility gas is available to some residents in the Village of Clear Lake from We Energies. Utility gas is being used for residential and farm applications.

DRAFT

Future Utility Projects

The Village of Clear Lake maintains a Capital Improvements Plan (CIP) to identify future utility and facility projects and provide projected costs over the next five years.

Utility and Community Facilities Goals, Objectives, and Policies

Goal 1: Provide quality community services and facilities at a reasonable cost to taxpayers.

Objectives

1. Make sure the demand doesn't exceed capacity.
2. Minimize the cost of repairing and replacing existing utilities and infrastructure.
3. Reduce the negative impacts of stormwater runoff to infrastructure and water quality of surface waters.

Policies

1. Design new community buildings that can accommodate future growth needs.
2. Continue to explore opportunities to share services with the surrounding communities.
3. Develop recommendations or standards for community facility design and aesthetics.
4. Explore grants such as Community Development Block Grants or DOT Transportation Economic Assistance, DNR Stewardship or create a TIF District to help offset utility improvements.
5. Analyze and assess existing utility infrastructure system and capacities to determine potential "smart growth" areas.
6. Investigate replacing the existing "JAWS" equipment for the fire department.
7. Explore upgrading the ambulance reporting system to a computerized one.
8. Replace the ambulance of the Clear Lake Ambulance Service in the near future.
9. Continue to contract out the solid waste disposal and recycling service needs of the Community.
10. Continue to support existing and future telecommunication infrastructure as long as new facilities maintain the rural character and can be developed in an environmentally friendly way.

Goal 2: Maintain historical aspects of public buildings.

Objectives

1. Preserve the Village's past.

DRAFT

2. Give the Village its own unique identity.
3. Draw people to the area/make Clear Lake a destination.
4. Increase economic activity.

Policies

1. Require additions or remodeling to match the existing structure and materials.

Goal 3: Support and improve the quality of schools, health care, parks, museums and library, etc.

Objectives

1. Maintain and improve the quality of life for Village and surrounding residents.
2. Make the Village more attractive to business and industry.

Policies

1. Ensure that learning institutions are adequately funded.
2. Improve communication between the Village, emergency services, and businesses.
3. Facilitate various activities in community parks.
4. Repair existing fencing, picnic shelters, and restrooms at park facilities when necessary.

Goal 4: Support long-range planning that addresses the existing populations and future growth of local and regional populations.

Objectives

1. Meet the long-term needs of residents.
2. Reduce long-term costs associated with area growth.
3. Analyze facilities to determine expansion needs.

Policies

1. Design buildings for future expansion that fits the original design.
2. Analyze trends for facility development and capacity.
3. Ensure adequate land for anticipated growth.
4. Update equipment and emergency plans for safety and cost-effectiveness as appropriate.
5. Maintain and update parks and recreation plan.
6. Acquire land that is necessary for expansion.

Goal 5: Provide quality utilities at a reasonable cost to taxpayers.

Objectives

1. Meet the long-term needs of residents.
2. Reduce long-term costs associated with area growth.

DRAFT

3. Analyze facilities to determine expansion needs.

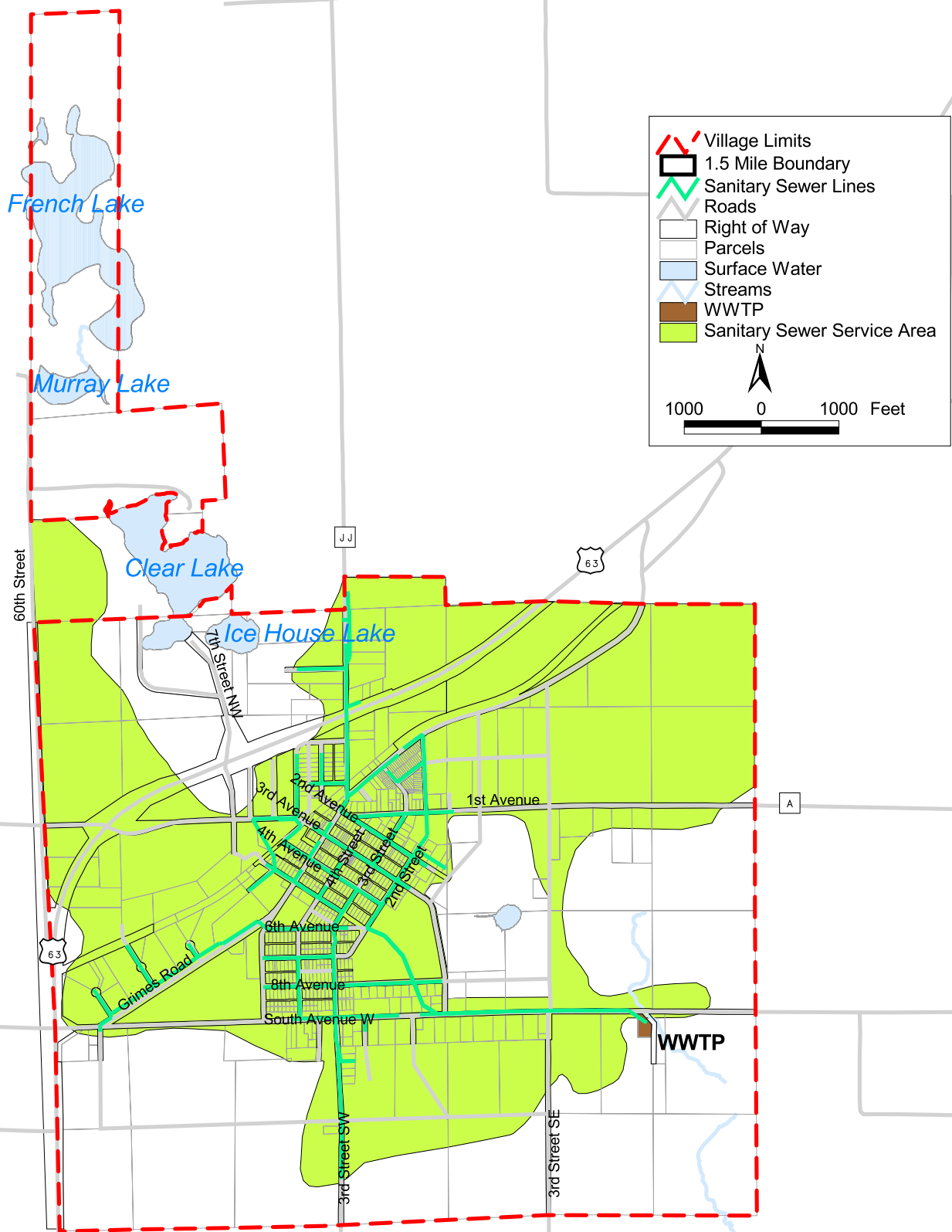
Policies

1. Upgrade utilities services as needed.
2. Analyze trends for future utility capacity of the WWTP, sanitary sewer service, and water supply.
3. Ensure adequate utility service needs for anticipated growth.
4. Update equipment for safety and cost-effectiveness as appropriate.

SANITARY SEWER SERVICE AREA

Village of Clear Lake

Map 7-1



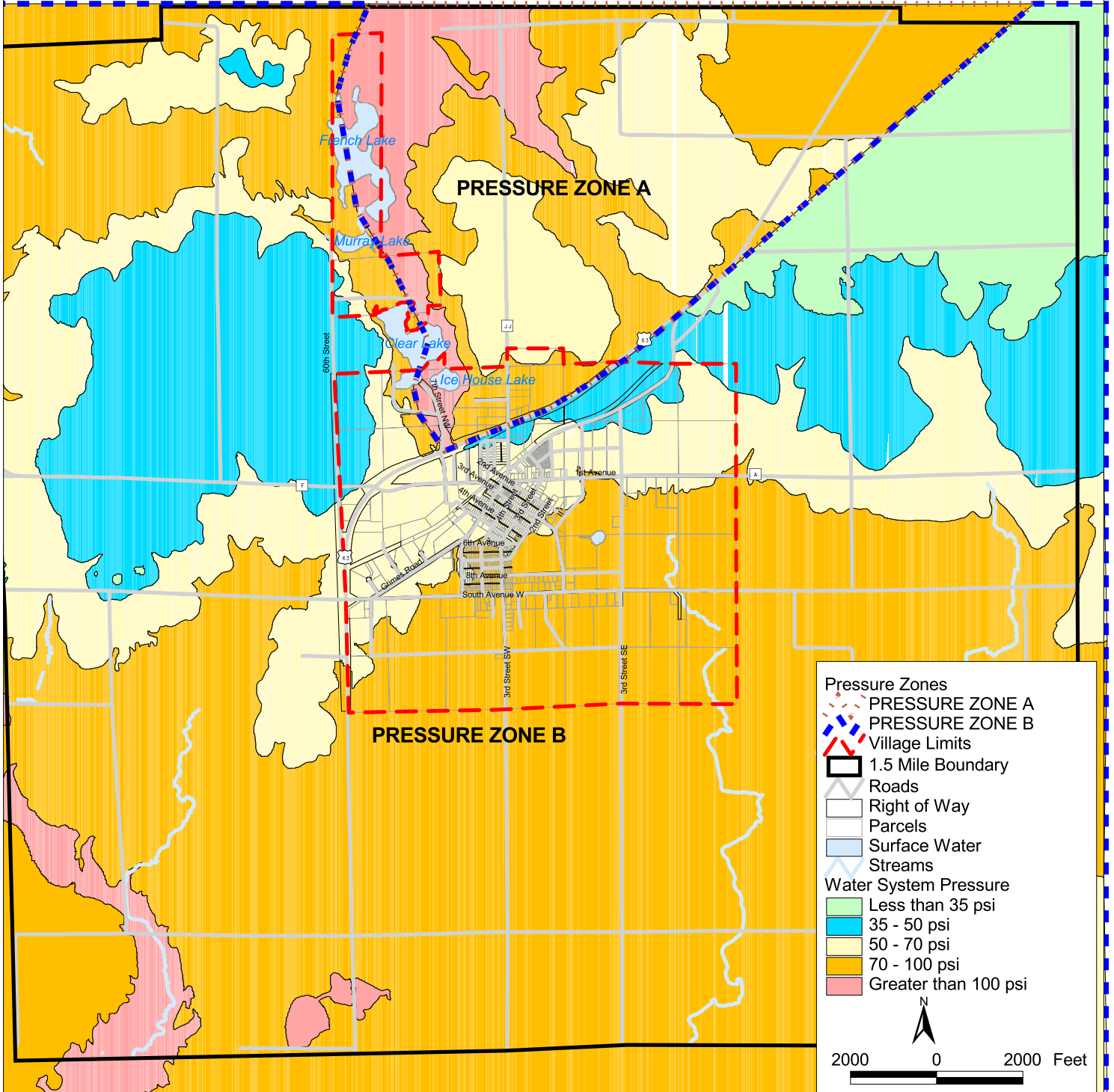
Source: Cedar Corporation



WATER PRESSURE ZONE

Village of Clear Lake

Map 7-2



Source: Cedar Corporation

