

Xcel Energy's Sky Park

East and West parking lots receive a facelift

Sky Park's west parking lot, located at 1414 West Hamilton Avenue in Eau Claire, WI was in need of complete reconstruction. While assisting in the reconstruction of this 54,500 square foot parking lot facility, Cedar Corporation also provided design development, and construction engineering services. The construction included removal of the old landfill material, installation of new storm sewer facilities, landscaping, including a landscape island (shown below), irrigation, asphalt parking surface, and new curb and gutter.

A temporary location was needed to accommodate parking for employees during the construction of the lot. The best long term solution for Xcel Energy was to build another parking lot on the east side of Sky Park's facility adjoining existing parking lots. The new east parking lot would not only service as

temporary parking, but would also satisfy the needs for additional employee parking space in the future. The expansion of approximately 38,000 square feet included a new driveway opening on West Hamilton Avenue, improving traffic circulation to the other parking lots. The expansion also provided new L.E.D. parking lot lights, a new sidewalk along West Hamilton Avenue, and a storm water management system. This system will help remove total suspended solids such as sand and debris from the storm water prior to discharge in to the city storm water.



604 Wilson Avenue
Menomonie, WI 54751
800-472-7372
715-235-9081
fax 715-235-2727
www.cedarcorp.com

Cedar Commentary



Published by Cedar Corporation, 604 Wilson Avenue, Menomonie, Wisconsin 54751, November 2010

Marathon City Library

Cozy, convenient, and welcoming

This one-story 3000 sq ft building is modest in size but has distinctive features to enhance its character, making it the perfect fit for the Village of Marathon City.

Due to its site location and size, the library has no real "backside" since the rear façade faces the village's Main Street, therefore it is designed to be the focal point of the building. The library's design emphasizes that idea, as upon entry one's eye is drawn through the library to the formal reading area then to the outdoor scenery where an existing ceremonial tree is framed by a large window. In order to better convenience its patrons, another feature of the library is a drive up window, which created a design challenge on this tight and sloping site.

In the designing of this project, Cedar Corporation utilized its architectural, electrical, structural, and civil engineering teams to fulfill the specific needs of the Marathon City Library.

For more information regarding site planning and building design please contact Cory Scheidler or Travis Schroeder at 1-800-472-7372



Front façade of Library (above). Below, left to right, rear focal point, drive up window located on front façade, and interior of library with a clear view of framed tree



Menomonie's Waste Water Treatment Facility

Currently ahead of scheduled completion

The City of Menomonie is upgrading their existing wastewater treatment plant located at 620 11th Avenue, Menomonie, WI. The city's wastewater plant currently has an average annual flow of 1.4 million gallons per day. The project started construction in February of 2010 and is currently under construction.

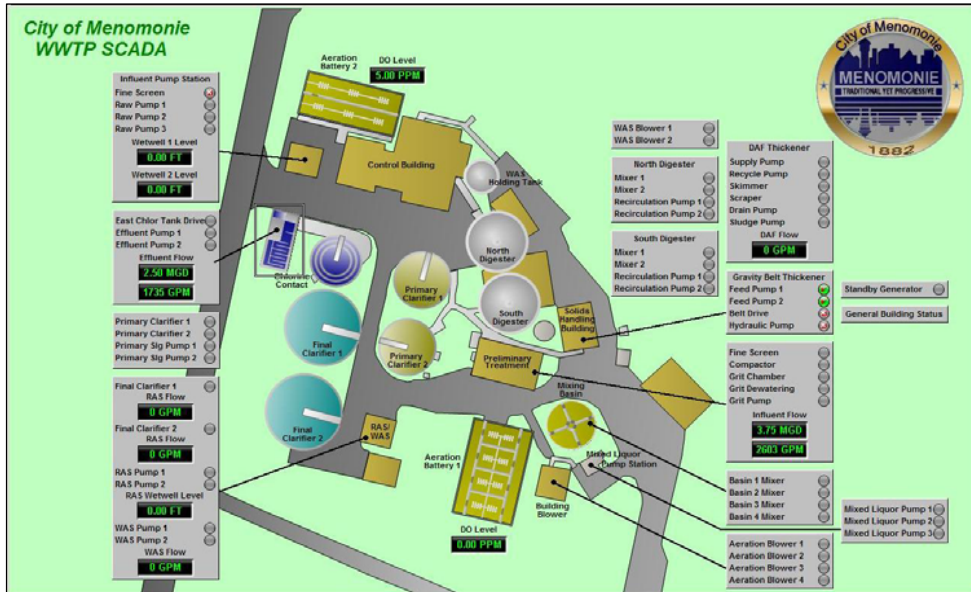
The general contractor, Staab Construction of Marshfield, WI is currently ahead of the scheduled May 2011 completion date with several of the new unit processes already on line.

Cedar Corporation, in partnership with Foth Infrastructure & Environment, LLC, completed engineering design of the improvements. The team also handled funding applications in a timely manner to meet funding deadlines. Currently the team is working on construction management, construction oversight, and contract administration for the city. The city is utilizing the Wisconsin DNR Clean Water Fund loan program to help finance the project.

The new facilities will eliminate hazardous spaces and troublesome maintenance on obsolete pumping equipment, and making the facilities more energy efficient.



Above, relocation / installation of new air line piping. Below, Supervisory Controls And Data Acquisition (SCADA).



Stormwater Utility: *Keeping water clean*



The term stormwater is used to describe runoff from a rainstorm or melting snow. As land is developed, the addition of impervious surfaces (such as, driveways, parking lots, and rooftops) alters the natural conditions and impacts water quality and runoff patterns potentially leading to flooding, erosion, and pollution. In order to minimize these impacts, local communities have installed ditch and pipe networks, stormwater ponds, and other "best management practices" to manage stormwater runoff.

A stormwater utility is a mechanism to generate dedicated revenue to fund both annual maintenance costs of current stormwater systems and projects identified to address additional stormwater management needs. Like other utilities, stormwater utilities collect fees from residents to pay for a product. In this case the product is mitigating water pollution, erosion, and flooding. Residents would typically have their rates established by the amount of impervious surface measured on their property. Stormwater utilities may be setup to fund: operation and maintenance, capital and debt service payments, and administration costs.

Some examples of eligible funding items include: street sweeping, inlet cleaning, ditch maintenance, pond maintenance, storm sewer repair projects, staff compensation, yard waste collection programs, erosion stabilization, mowing, stormwater pond construction projects, public education programs, and other costs associated with maintaining, or improving local stormwater management.

If you have questions on stormwater utility, please contact **Russ Kiviniemi** – Civil Group Director, at 800-472-7372 or by email russ.kiviniemi@cedarcorp.com.

